

665 Series Acrylic Calibration Check Phantoms

These economical calibration check phantoms are solid 15 cm cubes, constructed of laminated acrylic. Photon calibration checks can be conveniently and quickly performed at 5 cm depth through the top surface. The phantom is simply inverted for photon measurements at 10 cm utilizing same chamber cavity. The 665 - 600 and 665 - 700 series calibration check phantoms provide additional electron measurement at 1 cm and 1.5 cm depth, respectively, with an additional chamber cavity on one side. Field markings of 10 cm² are provided on all beam entrance surfaces.

Features:

- ▶ Photon measurements at 5 and 10 cm depth
- ▶ Electron measurements at 1 cm or 1.5 cm depth
- ▶ Compact and economical

Photons at 5/10 cm, electrons at 1 cm

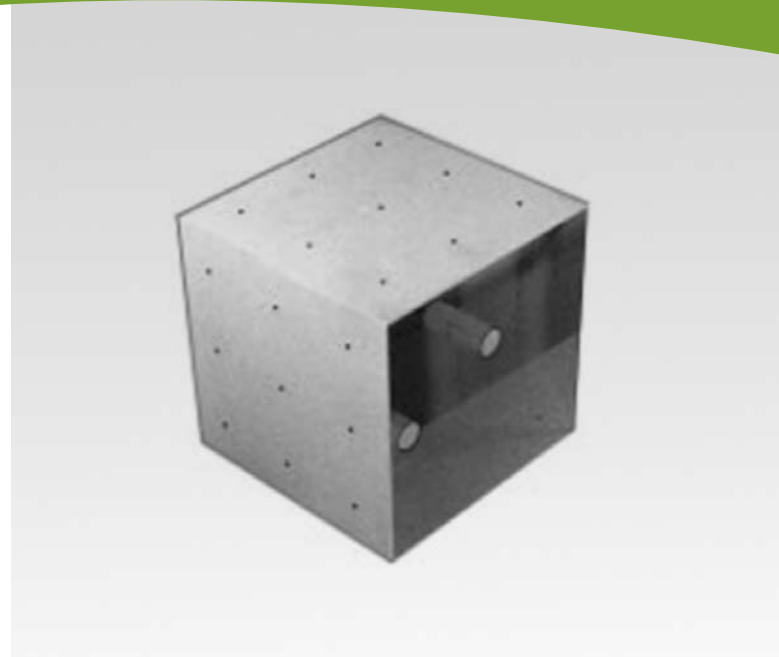
One photon hole at 5 cm and 10 cm distance from top and bottom, and one electron hole at 1 cm distance from one side

665-601	PTW N23333/ N30001, NE 2505/3, Farmer with acrylic Co-60 buildup cap, without buildup cap for electrons
665-602	PTW N233641/ N31003, NA 30-316/ 30-317, 0.3cc waterproof chambers, without buildup cap
665-622	Capintec PR-06C/ PR-06G with polystyrene Co-60 buildup cap for photons, without buildup cap for electrons
665-642	PTW N23323, NA 30-332/30-350, 0.1cc intracavitary chambers, without buildup cap

Photons at 5/10 cm, electrons at 1.5 cm

One photon hole at 5 cm and 10 cm distance from top and bottom, and one electron hole at 1.5 cm distance from one side

665-702	PTW N23333/ N30001, NE 2505/3, NA 30-351/ 30-352, 0.6 cc Farmer with acrylic Co-60 buildup cap
665-712	NE 2571A with Delrin Co-60 buildup cap
665-722	Capintec PR-06C and PR-06G with polystyrene Co-60 buildup cap
665-732	NE 2581A with Lucentine (polystyrene) Co-60 buildup cap
665-750	Exradin A12 without buildup cap
665-751	Exradin A12 with buildup cap
665-760	0.6 cc Farmer chambers without buildup cap



Specifications

Material:	clear acrylic (PMMA), laminated
Outside dimensions:	15 x 15 x 15 cm
Weight:	4 kg (8.8 lbs)
Cavity I.D. for 60Co buildup cap:	(diameter, material)
PTW Farmer:	16.4 mm, acrylic (PMMA)
Wellhofer, NE 2571A:	15.1 mm, Delrin (POM)
NE 2581A:	18.6 mm, polystyrene
Capintec PR-06C, PR-06G:	17.5 mm, polystyrene