



Best™ Integrated Brachytherapy Solutions

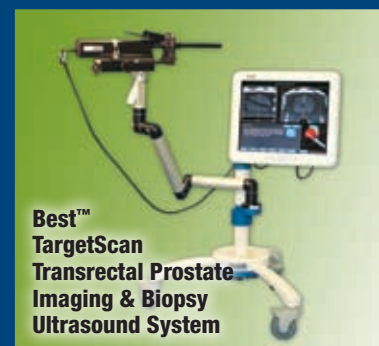
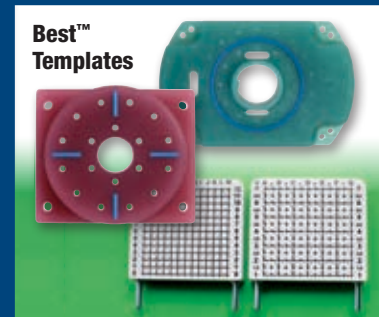
More than 60 years have gone into making Brachytherapy more precise, with very few side effects or complications, and excellent clinical outcomes in the treatment of localized cancers.

TeamBest manufactures and provides comprehensive medical devices and accessories needed for a fully integrated Brachytherapy program including: providing assistance setting up, licensing, procurement of equipment, proctoring, reimbursement consulting, patient education and marketing.

In addition, TeamBest can make Brachytherapy treatment more affordable by charging per procedure!

Our Brachytherapy products are manufactured with pride in the USA – providing everything you need from One World • One Source • The Best!

- Ultrasound Imaging Systems
- HDR Remote Afterloaders/Accessories
- LDR/HDR Treatment Planning Systems
- Stepper/Stabilizers
- LDR/HDR Templates
- Radioactive Seeds & Markers
- Needles & Applicators...and more!



Best Medical International, Inc. © 2020–2021

Best Medical International, Inc. 7643 Fullerton Road, Springfield, VA 22153 USA
tel: 703 451 2378 800 336 4970 www.besttotalsolutions.com www.teambest.com

AFRICA | ASIA | EUROPE | LATIN AMERICA | MIDDLE EAST | NORTH AMERICA

* Certain products shown are not available for sale currently.

Best™ Sonalis™ Ultrasound Imaging System

The Best™ Sonalis™ Ultrasound Imaging System provides superior visualization of HDR, LDR, RF or Cryosurgical procedures. Our patented SimulView™ Technology provides simultaneous “live” views of the prostate in both planes, thereby increasing treatment accuracy and precision.

- Totally sealed, self-healing antimicrobial keyboard with SensoFoil® Technology
- Longitudinal array provides for 140 mm length of view, encompassing the bladder, prostate and perineum
- Simultaneous imaging of transverse and sagittal planes
- PC Based System provides a platform for future upgrades and application-specific modules



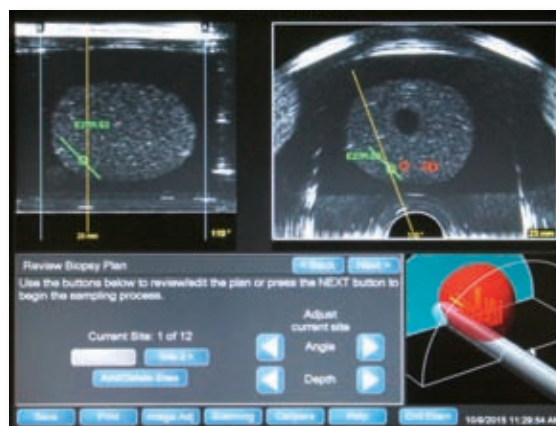
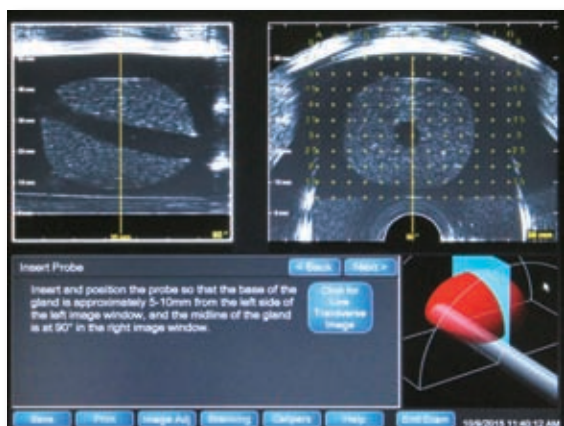
Advanced Keyboard Technology



Best™ TargetScan Touch™ System

An Ultrasound-based Stereotactic Biopsy Guidance & Tumor Localization System that allows a physician to acquire true 3D image data, manipulate it, and precisely plan and undertake a multi-sample biopsy of a targeted tissue mass in the prostate.

- Patented endorectal probe with multi-plane mechanical transducer with bi-planar imaging capability
- PC based digital hardware incorporating proprietary software platform for comprehensive imaging, planning, targeting and data storage/retrieval
- TargetScan controller, with Image Plane Visualization positioner, for fully automated transducer movement and precise scanning control
- Targeted biopsy system with single use needle and guide and multi-position probe carriage providing full sagittal and transverse access to the target site
- TargetScan platform providing stable/fixed probe positioning



Best™ HDR Remote Afterloader

Best™ HDR Remote Afterloader provides 20 channels for dose delivery with safety designs such as positive lock and verification for the transfer tubes, automatic check cable to verify the connections of all catheters and applicators, and radiation monitoring.

- Battery back-up in case of power failure and automated wire recovery
- Source wire tracking using sensors and encoders
- Treatment data maintained in case of failure and treatment resumed after fix
- Quick source replacement process, thereby reducing down time
- Automatic and manual wire retract in case of emergency
- Available with Cobalt-60 or Iridium-192 sources. Also, Ytterbium-169 source will be available soon!



Best™ Stepper/Stabilizer



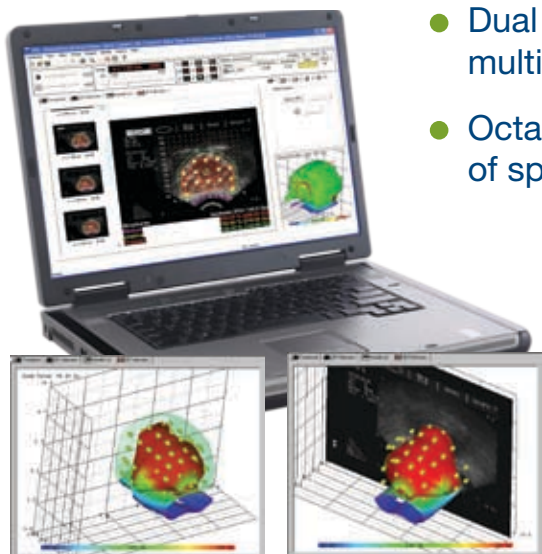
- Patented cradle design provides for the absolute calibration of the transverse ultrasound image
- Infinite travel in all six axes allows for smooth, one-handed positioning without requiring fine adjustments
- Fully autoclavable for rapid OR turnaround
- Mounts to multiple-width tables and all standard rail dimensions

Best™ UCT-1000 Universal Chair/Table

- 4-Function Hand-Held Pendant (Control)
- Electronic variable height control, back support, foot support and horizontal tilt 12 degrees – head or foot
- Padded variable height intravenous arm rest
- Removable Stainless Steel IV Pole
- Stainless steel bilateral cushioned knee supports
- Useful for brachytherapy, urology, GYN and other applications



Best™ Treatment Planning System (TPS)



- Dual Activity Module creates treatment plans using multiple activity sources
- Octant Therapy™ Module allows view of DVH values of specific prostate volumes
- Slice Shifter™ provides ability to correct image slice positioning errors
- Concurrent 2D & 3D Visualization allows instant visualization of seed placement, dose distribution & anatomical structures
- Pattern Load Feature – User-definable seed patterns can be used to initiate new plans

Best™ Double-Balloon Breast Brachytherapy Applicator



- Improved dose distribution and conformality
- Less dose to critical organs such as skin, lung, heart, chest wall, etc.
- Convenient to use
- US FDA 510(k) registered

Best™ Intra Luminal Balloon Applicator (Esophageal)



- Optimized dose delivery
- Soft flexible design for patient comfort
- Different sizes available to provide for selection flexibility
- Separate treatment catheter markers available for imaging and treatment planning