



**Novoste™**

# Vascular Brachytherapy for In-stent Restenosis

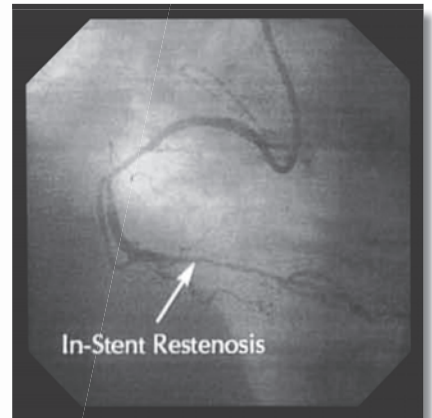
Available in 30 mm,  
40 mm & 60 mm  
Source Train Lengths

## Beta-Cath™ 3.5F System

- Convenient & Minimal Dosimetry Calculations
- Portable & Reusable
  - Short Treatment Time (3-4 min)
  - 6F Guide Catheter Compatibility



VBT Designed  
for the Cath Lab



In-Stent Restenosis



Post Brachytherapy

Please visit our website for IFU information.

© 2008–2018 TeamBest Companies



Best Vascular, Inc. 4350 International Blvd Norcross, Georgia 30093 USA  
Tel: 770 717 0904 800 668 6783 [www.novoste.com](http://www.novoste.com) [www.bestvascular.com](http://www.bestvascular.com)

AFRICA | ASIA | EUROPE | LATIN AMERICA | MIDDLE EAST | NORTH AMERICA